

# ALPHA OPC DATA ACCESS & EXCEL RTD SERVER



## What is the Alpha Server?

The **Measuresoft Alpha Server** is an OPC Data Access and Excel RTD server for the Alphascan measurement module range. The server comes equipped with desktop configuration and monitoring tools making network setup a straightforward task. Setting up the Alpha network, modules and channels is easy and user friendly. Configuration is then used by the server to issue commands to the Alpha via a RS232 for single module operation or via RS485 for multiple module operations. During scanning operations, the **Measuresoft Alpha Server** manages all aspects of Alpha communications; initializing and programming the Alpha modules, commanding them to take measurements, receiving the incoming channel data and constantly monitoring the system for errors.

## Data Acquisition from Alpha Devices

### Features

Compatible with legacy (XP) and current versions of Windows

Available as 32-bit or 64-bit version

Compatible with the OPC Data Access v1.0 and v2.0 standards

Compatible with the Excel RTD standard

Supports multiple Alpha Networks on a single PC using multiple RS485 interfaces

Interrogation of Alpha network for modules and reading of configuration

Slow and fast acquisition speeds

Server can act as controller or listener to Alpha networks, allowing other systems to be on the Alpha network

Diagnostic channels and debug output for monitoring Alpha communications

Full traceability of all configuration changes to Alpha

Dynamic calibration and reconfiguration of Alpha channels e.g. modes, tags etc. without having to stop OPC clients

Support for auxiliary outputs

Support for all Alpha module types and all associated measurement modes and all Alpha settings

**630A** – Phase decoder, counter and status module

**631** – Phase decoder, counter and relay output module

**634A** – Phase decoder, counter and isolated analog module

**636** – Phase decoder, counter, isolated analog and relay output module

**636A** – Phase decoder, counter, isolated analog and relay output module

**640** – Analog output module

**910** – Thermocouple module 20 channel

**911** – Voltage and current input module

**912** – RTD, resistance, strain and voltage input module

**913** – RTD, resistance, strain voltage and thermocouple input module

**914** – Strain gauge, voltage and thermocouple input module

**917** – RTD, resistance strain voltage and thermocouple input module

**930** – 930 Digital status module

**931** – 931 Digital input/output module

**933** – Event input module

**934A** – Phase decoder, counter and isolated analog module

**934S** – Phase decoder, counter and isolated analog module

**940** – Analog output module



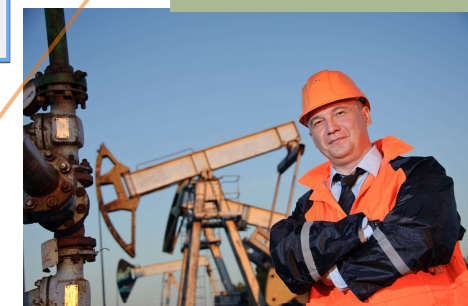
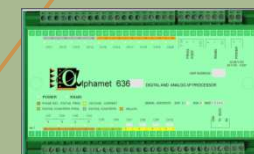
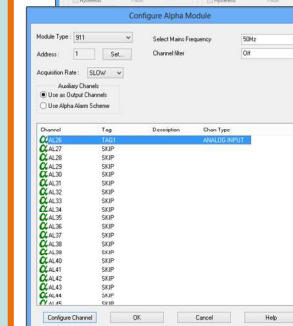
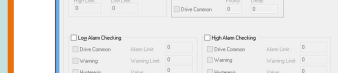
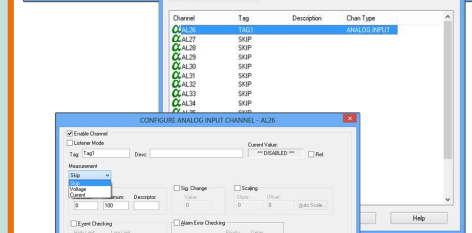
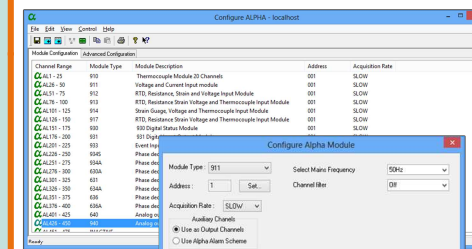
### Key Benefits

Connects third party systems to Alpha networks

Allows you to use Excel as a data monitoring tool

Eliminates the need for customised programming of, or replacement of your software

Allows you to support Alpha hardware on modern PC platforms into the future, without major investment in replacement software or hardware



*‘Offering fast, robust and secure data acquisition from a wide range of supported Alpha devices’*

Partnership Courtyard,  
Ramparts Road,  
Dundalk, Ireland  
Tel: +353 42 9332399

sales@measuresoft.com

2626 South Loop West, Suite 620,  
Houston, TX, 77054,  
USA  
Tel +1 281 969 7529

www.measuresoft.com

